

SOUR TAXI

Sample ID: BIA251218S0497

Strain: HL-16

Harvest Lot:

Matrix: Plant

Type: Flower - Cured

Sample Size: 5.24 g

Lot#:

Produced:

Collected:

Received: 12/19/2025

Completed: 12/30/2025

Batch#:

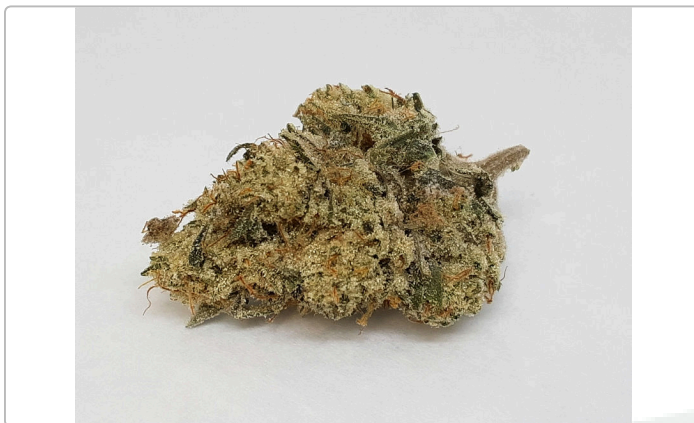
Client

FLORIST VT LLC

Lic. #

3365 VT RTE 17

Starksboro, VT 05487



Summary

Test	Date Tested	Result
Sample		Complete
Cannabinoids	12/23/2025	Complete
Moisture	12/19/2025	7.10% - Complete
Water Activity	12/19/2025	0.265 aw - Complete
Microbials	12/24/2025	Complete

Cannabinoids

Completed

31.58%					0.10%					39.41%				
Total THC					Total CBD					Total Cannabinoids				
Analyte	LOQ	Results	Results	Mass	Analyte	LOQ	Results	Results	Mass	Analyte	LOQ	Results	Results	Mass
	mg/g	%	mg/g	mg/serving		mg/g	%	mg/g	mg/serving		mg/g	%	mg/g	mg/serving
CBDVa	0.0003	<LOQ	<LOQ		CBCVa	0.0003	<LOQ	<LOQ		Total THC		31.58	315.81	
CBDV	0.0003	<LOQ	<LOQ		CBNa	0.0003	<LOQ	<LOQ		Total CBD		0.10	0.98	
CBDa	0.0005	0.11	1.1		Δ9-THC	0.0005	0.29	2.9		Total		39.41	394.14	0.00
CBGa	0.0005	2.28	22.8		Δ8-THC	0.0003	<LOQ	<LOQ						
CBG	0.0005	0.17	1.7		Δ10-THC*	0.0002	0.20	2.0						
CBD	0.0005	<LOQ	<LOQ		CBL	0.0005	<LOQ	<LOQ						
THCV	0.0003	0.08	0.8		CBC	0.0003	<LOQ	<LOQ						
CBLV	0.0003	0.11	1.1		THCa	0.0005	35.68	356.8						
CBVC	0.0003	<LOQ	<LOQ		CBCa	0.0006	0.30	3.0						
THCVa	0.0003	0.20	2.0		CBLa	0.0005	<LOQ	<LOQ						
CBN	0.0005	<LOQ	<LOQ											

Analyst: 048

Cannabinoids Methodology: High Performance Liquid Chromatography (HPLC) using PerkinElmer FLEXAR™ with Photo Diode Array Detector (PDA)

Total CBD and total THC are calculated values, to account for assumed decarboxylation from the acid form (THCA or CBDA) to the neutral form, causing weight loss of the acid group. These values are calculated as follows:

$$\text{Total THC} = (\text{THCA} \times 0.877) + \Delta 9\text{-THC}$$

$$\text{Total CBD} = (\text{CBDA} \times 0.877) + \text{CBD Reagent}$$

Blanks: < LOQs for all analytes

LOQ = The lowest quantity that this method can reliably detect. Any cannabinoid that was not detected is assumed to be less than the stated LOQ (<LOQ).

All results reflect dry weight of material, based on % moisture of the sample.

Measurement of Uncertainty (MU): the parameter, associated with the result of a measurement, that characterizes the dispersion of the values that could reasonably be attributed to the particular quantity subject to measurement. Δ9-THC MU = ±0.005% Total THC MU = ±0.007%

All other cannabinoid MU values are available upon request.

All moisture and water activity analysis is determined by dewpoint measurement using an AQUALAB water activity meter.

*The result is the sum of delta-10 isomers.




 Luke Emerson-Mason
 Laboratory Director
 12/30/2025

 Confident LIMS
 All Rights Reserved
coa.support@confidentlims.com
 (866) 506-5866
www.confidentlims.com


SOUR TAXI

Sample ID: BIA251218S0497
 Strain: HL-16
 Harvest Lot:
 Matrix: Plant
 Type: Flower - Cured
 Sample Size: 5.24 g
 Lot#:

Produced:
 Collected:
 Received: 12/19/2025
 Completed: 12/30/2025
 Batch#:

Client
FLORIST VT LLC
 Lic. #
 3365 VT RTE 17
 Starksboro, VT 05487

Pathogens

Completed

Pathogens	LOD	Results
	CFU/g	CFU/g
Aspergillus	5	Not Detected
Shiga Toxin E. Coli	5	Not Detected
Salmonella SPP	5	Not Detected

Analyst: 018

Test Methodology: Bio-Rad IQ-Check PCR Kits

cfu/g = colony forming units per gram

LOD = The lowest quantity that this method can reliably detect. Any microbial growth that was not detected is assumed to be less than the stated LOD (<LOD).

Reagent Blanks: <LOD for all analytes




Luke Emerson-Mason
 Laboratory Director
 12/30/2025

Confident LIMS
 All Rights Reserved
coa.support@confidentlims.com
 (866) 506-5866
www.confidentlims.com

